



rusky rose
BY AMY

Surface Pattern Design Portfolio



amy@ruskyrose.com

www.ruskyrosebyamy.com

[@ruskyrosebyamy](https://www.instagram.com/ruskyrosebyamy)



Amy Ruskusky of Rusky Rose by Amy

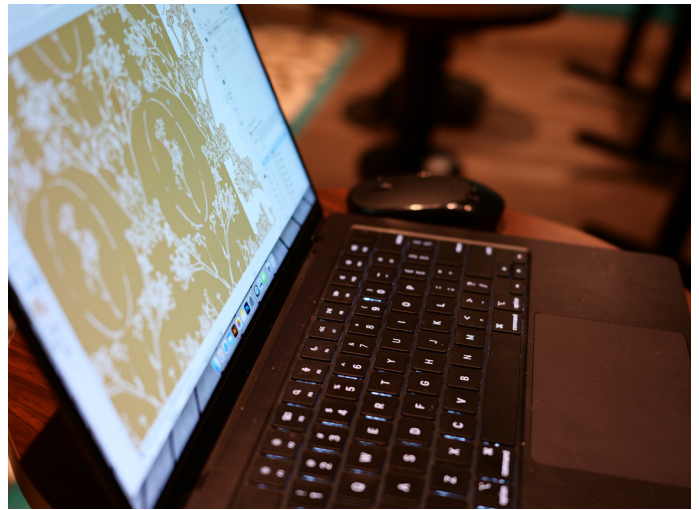
Amy Ruskusky is the artist and heart behind Rusky Rose by Amy, a surface pattern design studio rooted in storytelling, nature, and nostalgia. Based in Minnesota, she's a mother of two with a deep love for quiet moments, open spaces, and the small details that make a place feel like home. With a background in nursing and a lifelong connection to the natural world, Amy brings empathy, intentionality, and warmth to her creative work. Whether walking through the woods with her children or pressing leaves in her sketchbook, she's always looking for the next story waiting to be told through design.



amy@ruskyrose.com

www.ruskyrosebyamy.com

[@ruskyrosebyamy](https://www.instagram.com/ruskyrosebyamy)



The Process

Amy Ruskusky's work is inspired by the quiet beauty of the natural world and shaped by personal memory. Under the name Rusky Rose by Amy, she creates surface pattern designs that begin with a moment from her past—a place, a story, a feeling—and evolve into patterns told through simplified, expressive detail. She gravitates toward organic textures, animals, and subtle geometric elements, often working from real-life botanical impressions. Her goal is to bring the calm, raw texture of nature indoors, creating designs that invite people to enjoy the feeling of the outdoors all year round. Through meaningful, story-driven design, Amy invites others to connect to their own memories and spaces in new ways.



amy@ruskyrose.com

www.ruskyrosebyamy.com

[@ruskyrosebyamy](https://www.instagram.com/ruskyrosebyamy)

DORMANT

Dormant captures the quiet strength of stillness through layered textures and botanical impressions, inspired by overlooked moments and the early signs of spring.



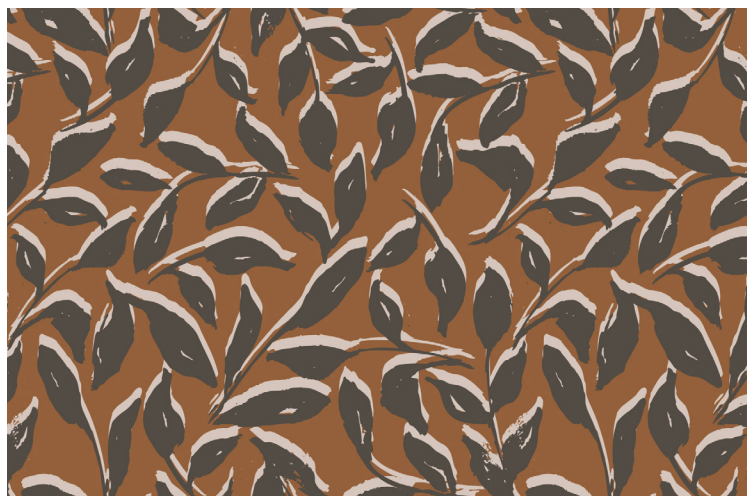
Dormant



Breathe



Reflections



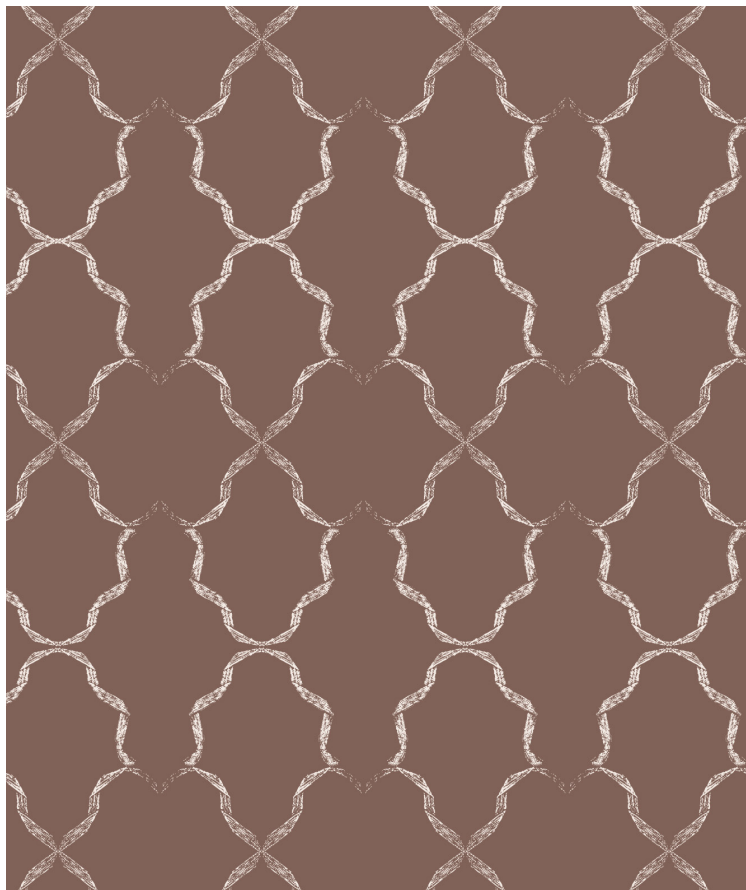
Adrift



amy@ruskyrose.com

www.ruskyrosebyamy.com

[@ruskyrosebyamy](https://www.instagram.com/ruskyrosebyamy)



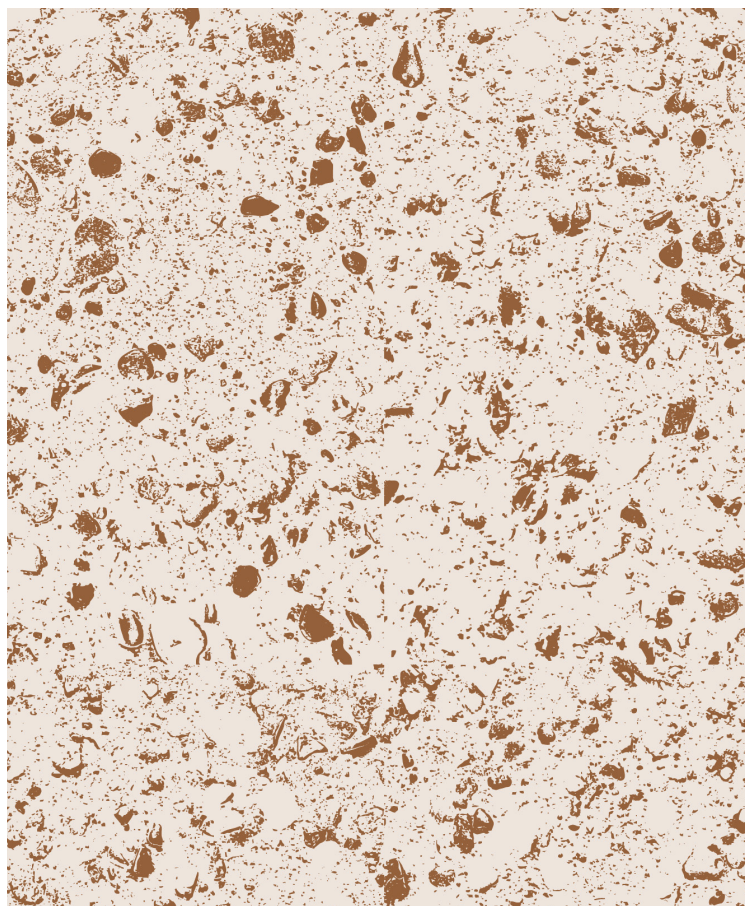
Rhythm



Thicket

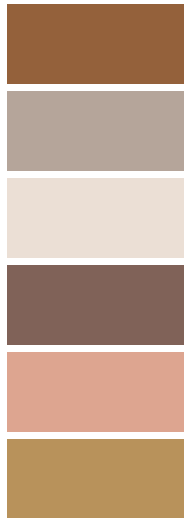


Dancing



Pebbles





amy@ruskyrose.com

www.ruskyrosebyamy.com

@ruskyrosebyamy

Haven

Haven is a nostalgic collection rooted in the comfort of rural life, drawing from Amy's childhood memories of tractors, open fields, and quiet simplicity. Through warm textures and familiar motifs, it evokes a sense of home, belonging, and peace.



Stillroot



1998



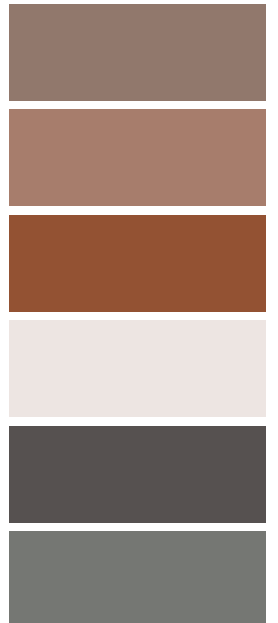
Oliver



Mabel



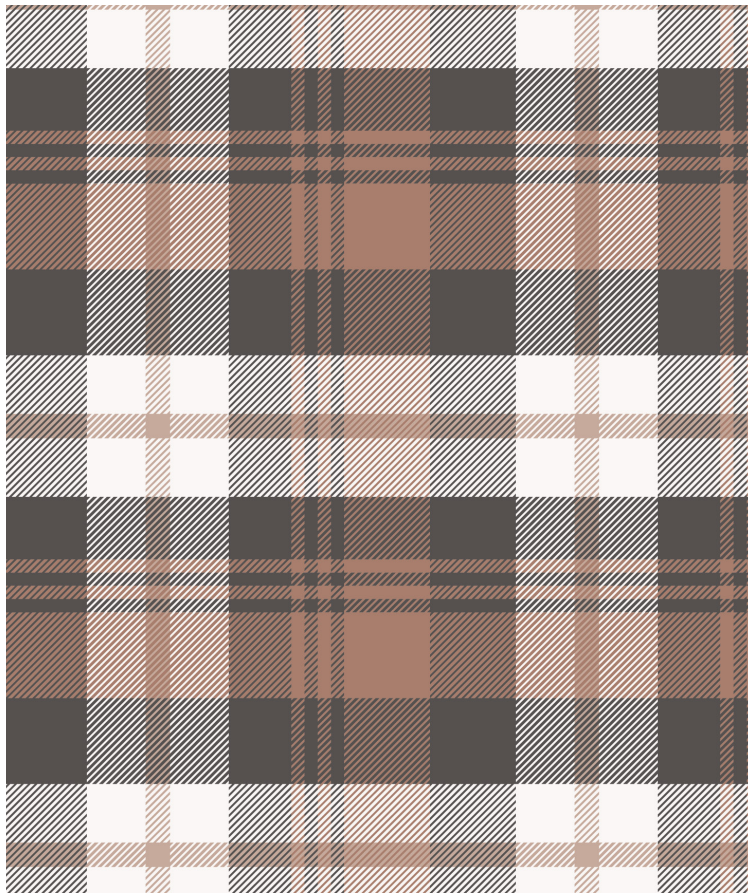
Faye



amy@ruskyrose.com

www.ruskyrosebyamy.com

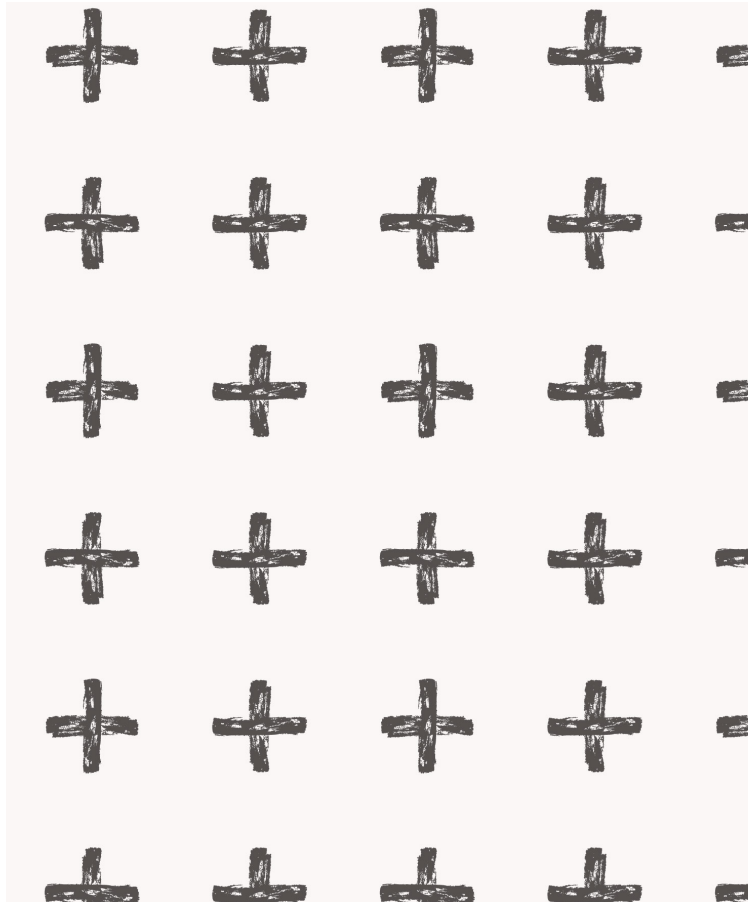
@ruskyrosebyamy



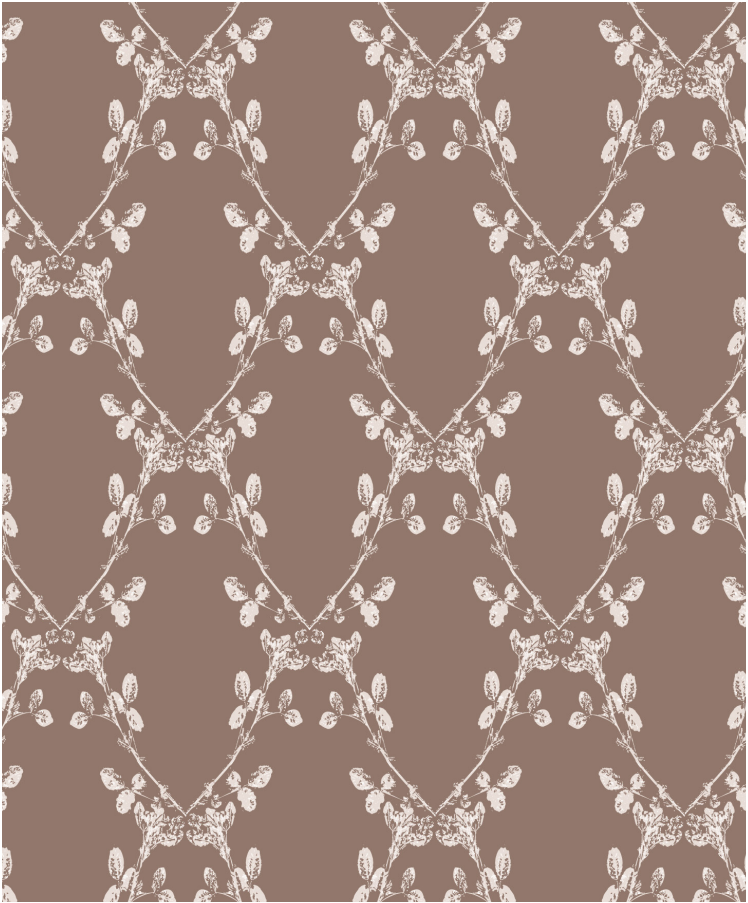
Nellie



Millie



Cora



Ruth





amy@ruskyrose.com

www.ruskyrosebyamy.com

[@ruskyrosebyamy](https://www.instagram.com/ruskyrosebyamy)

IMPRESSIONS

Impressions is Amy's first collection of hand-pressed botanicals, capturing nature's fleeting beauty through layered textures and earthy detail.



Wild and Free



Susan



The Dance



amy@ruskyrose.com

www.ruskyrosebyamy.com

[@ruskyrosebyamy](https://www.instagram.com/ruskyrosebyamy)



Checks



Grace



Rock Springs



Buds



amy@ruskyrose.com

www.ruskyrosebyamy.com

[@ruskyrosebyamy](https://www.instagram.com/ruskyrosebyamy)



amy@ruskyrose.com

www.ruskyrosebyamy.com

[@ruskyrosebyamy](https://www.instagram.com/ruskyrosebyamy)

Revive

Revive marks a creative reawakening, featuring earthy tones and delicate botanicals. It reflects renewal through organic textures and playful, restorative design.



Twilight



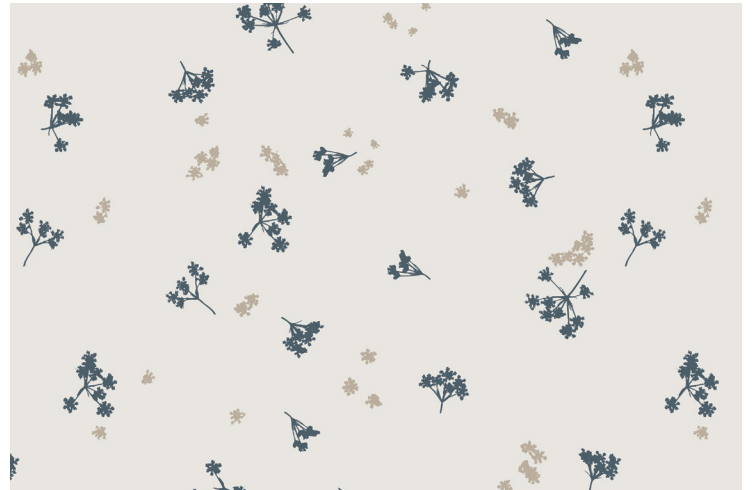
Estelle



Clara



Loretta



Whisper



amy@ruskyrose.com

www.ruskyrosebyamy.com

[@ruskyrosebyamy](https://www.instagram.com/ruskyrosebyamy)



amy@ruskyrose.com

www.ruskyrosebyamy.com

[@ruskyrosebyamy](https://www.instagram.com/ruskyrosebyamy)

A detailed botanical illustration in a muted sage green color on a light beige background. The illustration features various plants, including tall, slender stems with clusters of small flowers, fern-like leaves with feathery fronds, and broad, pointed leaves. The style is reminiscent of vintage botanical prints.

rusky rose
BY AMY

@ruskyrosebyamy
amy@ruskyrose.com
www.ruskyrosebyamy.com